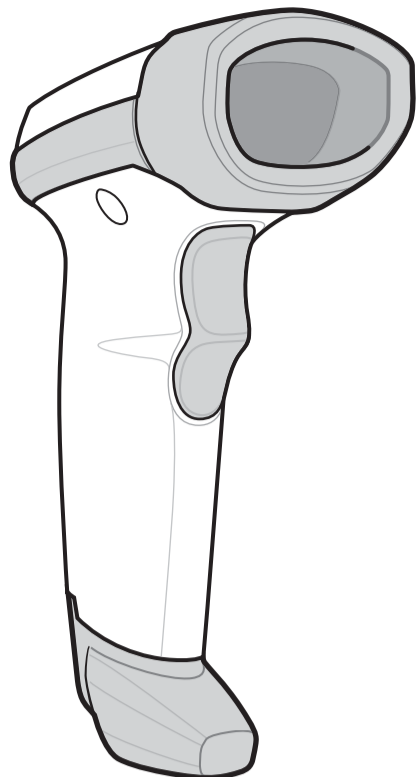


LI2208 LINEAR IMAGER QUICK START GUIDE

<http://www.motorolasolutions.com/LI2208> See Product Reference Guide for detailed information

POST IN WORK AREA



SET DEFAULTS / ENTER KEY BAR CODES

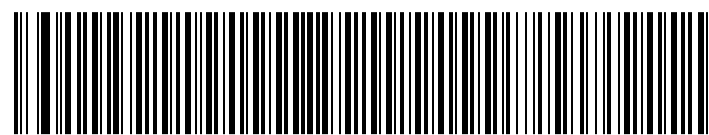
SET DEFAULTS



RETURN TO FACTORY DEFAULTS

ADD AN ENTER KEY (Carriage Return/Line Feed)

To add an Enter key after scanned data, scan the bar code below.



ADD AN ENTER KEY (CARRIAGE RETURN/LINE FEED)

TAB KEY BAR CODE

ADD A TAB KEY

To add a Tab key after scanned data, scan the bar code below.



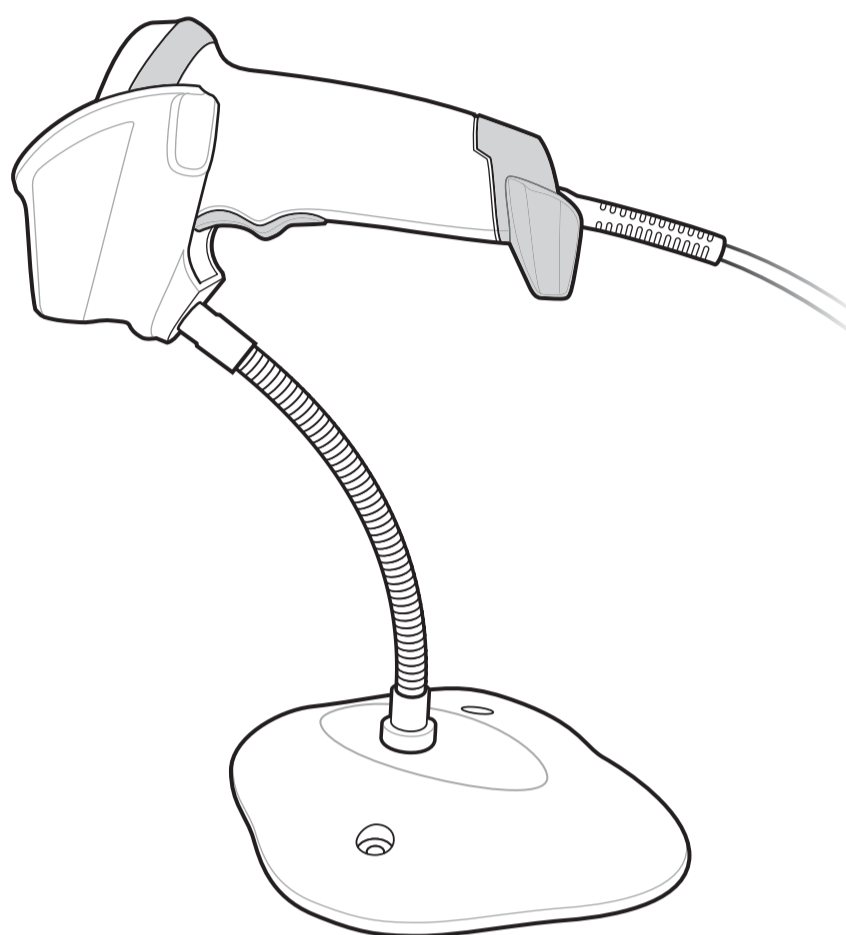
ADD A TAB KEY

SCANNER FEATURES



- 1 Scan Window
- 2 Scan Trigger
- 3 LED
- 4 Beeper

PRESENTATION MODE



USB CAPS LOCK OVERRIDE BAR CODE



USB - OVERRIDE CAPS LOCK KEY (ENABLE)

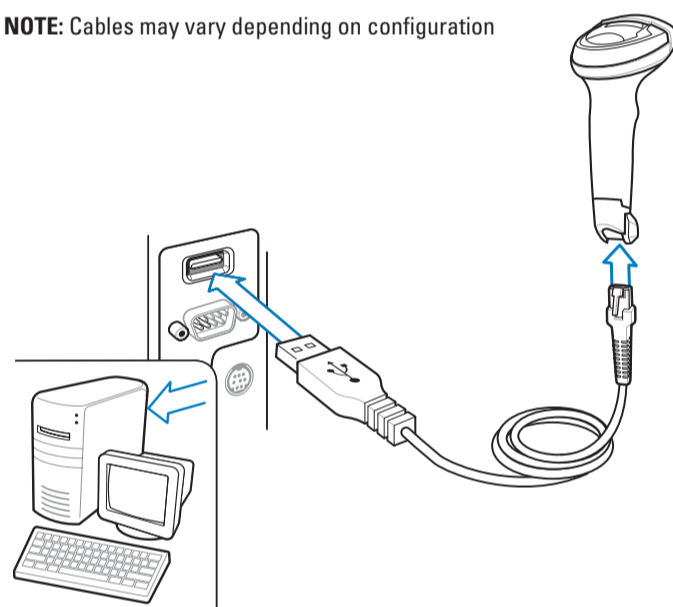


*USB - DO NOT OVERRIDE CAPS LOCK KEY (DISABLE)

STEP 1 - CONNECT HOST INTERFACE

USB

NOTE: Cables may vary depending on configuration



STEP 2 - SET UP INTERFACE (Scan Host Bar Codes)

USB

Scan **ONE** of the bar codes below

The interface cable automatically detects the host interface type and uses the default setting. If the default (*) does not meet your requirements, scan another host bar code below.



*USB KEYBOARD (HID)



IBM TABLE TOP USB



SNAPI WITHOUT IMAGING



USB CDC Host



IBM HAND-HELD USB



IBM OPOS (IBM HAND-HELD USB with FULL SCAN ENABLE)

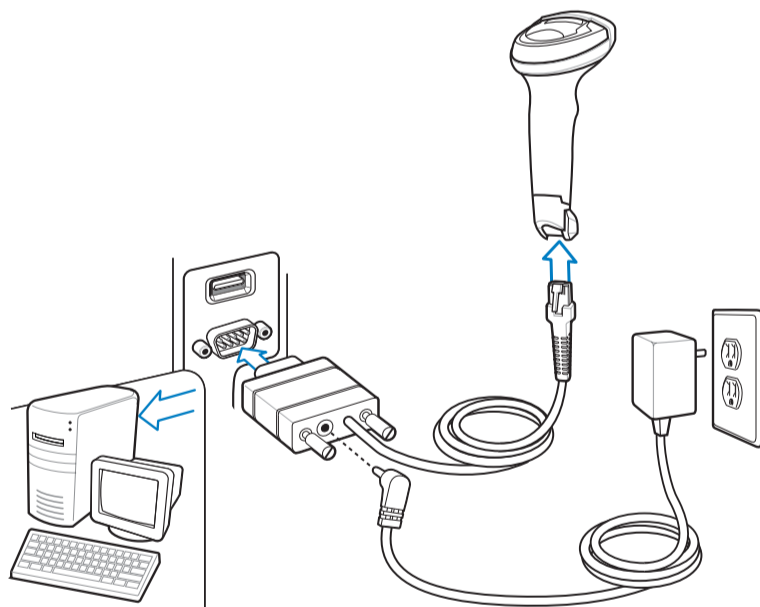


SIMPLE COM PORT EMULATION



TOSHIBA TEC Host

RS-232



RS-232

Scan **ONE** of the bar codes below

The interface cable automatically detects the host interface type and uses the default setting. If the default (*) does not meet your requirements, scan another host bar code below.



*STANDARD RS-232



NIXDORF RS-232 MODE A



ICL RS-232



NIXDORF RS-232 MODE B

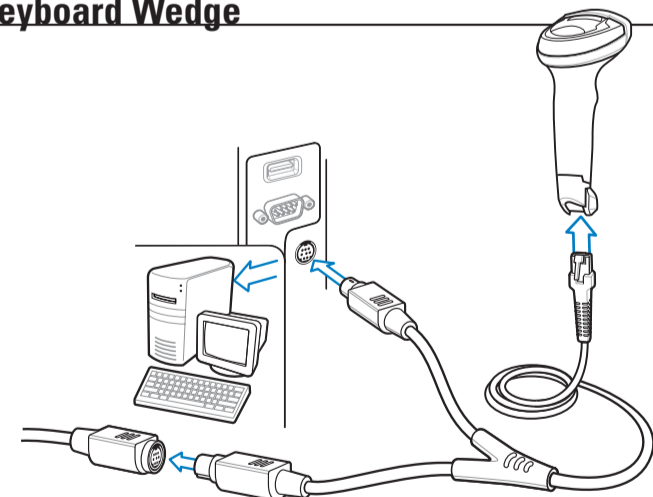


OPOS/JPOS



FUJITSU RS-232

Keyboard Wedge



Keyboard Wedge

Scan a bar code below

The Auto-Host Detect Cable feature automatically detects the host interface type and uses the default setting. If the default (*) does not meet your requirements, scan the IBM PC/AT and IBM PC COMPATIBLE bar code below.

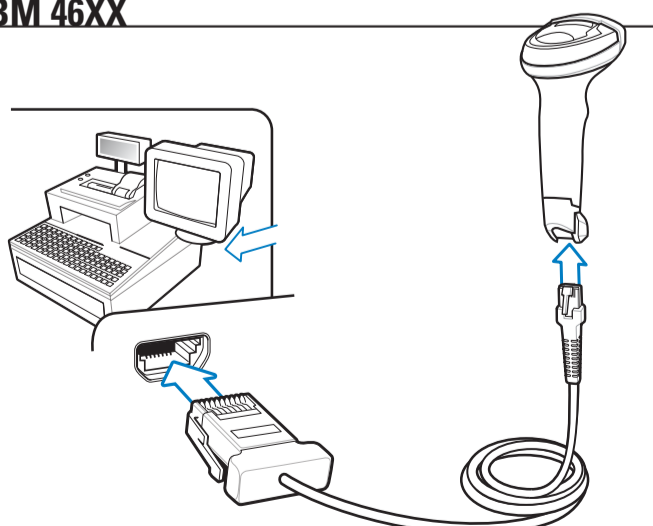


*IBM AT NOTEBOOK



IBM PC/AT and IBM PC COMPATIBLE

IBM 46XX



IBM 46XX

Scan **ONE** of the bar codes below

The Auto-Host Detect Cable feature automatically detects the host interface type, but there is no default setting. Scan one of the bar codes below to select the appropriate port.



NON-IBM SCANNER EMULATION (PORT 5B)



TABLE-TOP SCANNER EMULATION (PORT 17)



HAND-HELD SCANNER EMULATION (PORT 9B)

123Scan²

ABOUT 123Scan²

123Scan² is an easy-to-use, PC-based software tool that enables rapid and easy customized setup of a scanner via a bar code or USB cable. For more information, visit: <http://www.motorolasolutions.com/123Scan>.

UTILITY FUNCTIONALITY

- Device Configuration
- Electronic Programming (USB Cable)
- Programming Bar Code(s)
- Data View – Scan Log (Display Scanned Bar Code Data)
- Access Asset Tracking Information
- Upgrade Firmware and View Release Notes
- Remote Management (SMS Package Generation)

LI2208 LINEAR IMAGER

SCANNING

POST IN WORK AREA



012345

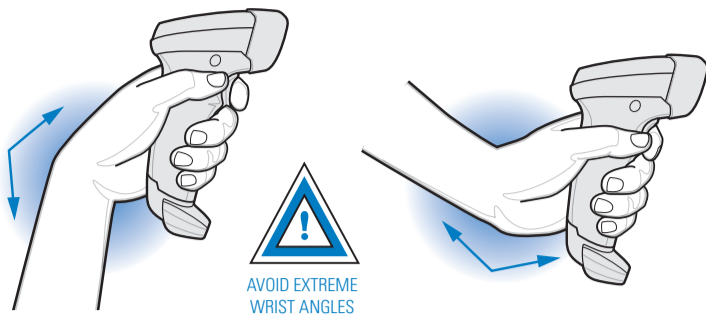
Aiming



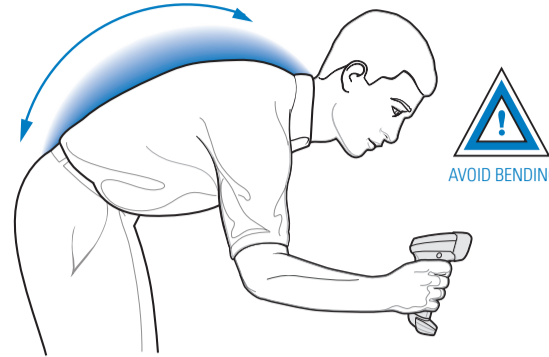
012345

RECOMMENDED USAGE GUIDE - OPTIMUM BODY POSTURE

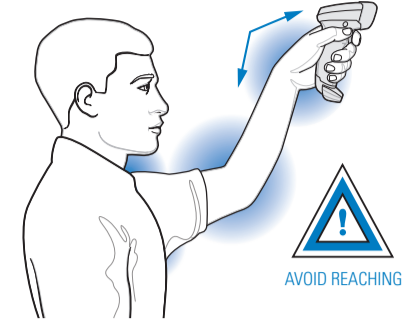
Avoid Extreme Wrist Angles



Avoid Bending



Avoid Reaching



BEEPER INDICATIONS

| Indication | Beeper Sequence |
|---|------------------------|
| Power up | Low/medium/high beep |
| Bar code decoded | Short high beep |
| Transmission error detected; data is ignored | 4 long low beeps |
| Successful parameter setting | High/low/high/low beep |
| Correct programming sequence performed | High/low beep |
| Incorrect programming sequence, or Cancel bar code scanned | Low/high beep |

LED INDICATIONS

| Hand-Held Scanning | |
|---|-----------------|
| Indication | LED Indicator |
| Scanner is on and ready to scan, or no power to scanner | Off |
| Bar code is successfully decoded | Green |
| Transmission error | Red |
| Hands-Free (Presentation) Scanning | |
| No power to scanner | Off |
| Scanner is ready to scan | Green |
| Bar code is successfully decoded | Off Momentarily |
| Transmission error | Red |

Local Contact: _____

TROUBLESHOOTING

| Scanner not working | |
|--|---|
| No power to scanner | Check system power. |
| Scanner is disabled | Ensure that correct host interface cable is used. |
| Scanner decoding bar code, but data not transmitting to host | |
| Host interface not configured properly | Scan appropriate host parameter bar codes |
| Interface cable is loose | Ensure all cable connections are secure |

| Scanner not decoding bar code | |
|---|---|
| Scanner not programmed for bar code type | Ensure scanner is programmed to read type of bar code being scanned. |
| Bar code unreadable | Ensure bar code is not defaced; try scanning test bar code of same bar code type. |
| Distance between scanner and bar code incorrect | Move scanner closer to, or further from bar code. |
| Scanned data incorrectly displayed on host | |
| Host interface not configured properly | Scan appropriate host parameter bar codes. |

REGULATORY INFORMATION

© 2014 Symbol Technologies, Inc.

Zebra reserves the right to make changes to any product to improve reliability, function, or design. Zebra does not assume any product liability arising out of, or in connection with, the application or use of any product, circuit, or application described herein. No license is granted, either expressly or by implication, estoppel, or otherwise under any patent right or patent, covering or relating to any combination, system, apparatus, machine, material, method, or process in which Zebra products might be used. An implied license exists only for equipment, circuits, and subsystems contained in Zebra products.

Power Supply

Use ONLY a Zebra approved UL LISTED ITE (IEC/EN 60950-1, SELV) power supply with electrical ratings: Output 5Vdc, min 850mA, with a maximum ambient temperature of at least 40 degrees C. Use of alternative power supply will invalidate any approvals given to this unit and may be dangerous.

Warranty

For the complete Zebra hardware product warranty statement, go to: <http://www.motorolasolutions.com/warranty>.

For Australia Only.

This warranty is given by Zebra Technologies Asia Pacific Pte. Ltd., 71 Robinson Road, #05-02/03, Singapore 068895, Singapore. Our goods come with guarantees that cannot be excluded under the Australia Consumer Law. You are entitled to a replacement or refund for a major failure and compensation for any other reasonably foreseeable loss or damage. You are also entitled to have the goods repaired or replaced if the goods fail to be of acceptable quality and the failure does not amount to a major failure. Zebra Technologies Corporation Australia's limited warranty above is in addition to any rights and remedies you may have under the Australian Consumer Law. If you have any queries, please call Zebra Technologies Corporation at +65 6858 0722. You may also visit our website: <http://www.zebra.com> for the most updated warranty terms.

Service Information

If you have a problem using the equipment, contact your facility's Technical or Systems Support. If there is a problem with the equipment, they will contact the Zebra Global Customer Support Center at: <http://www.motorolasolutions.com/support>. For the latest version of this guide go to: <http://www.motorolasolutions.com/support>.

Waste Electrical and Electronic Equipment (WEEE)

Bulgarian: За клиентите от ЕС. След края на ползването им всички продукти трябва да се връщат на Zebra за рециклиране. За информация относно връщането на продукти, моля отидете на адрес: <http://www.motorolasolutions.com/recycling/weee>.

Čeština: Pro zákazníky z EU: Všechny produkty je nutné po skončení jejich životnosti vrátit společnosti Zebra k recyklaci. Informace o způsobu vrácení produktu najdete na webové stránce: <http://www.motorolasolutions.com/recycling/weee>.

Dansk: Til kunder i EU: Alle produkter skal returneres til Zebra til recirkulering, når de er udtjent. Læs oplysningerne om returnering af produkter på: <http://www.motorolasolutions.com/recycling/weee>.

Deutsch: Für Kunden innerhalb der EU: Alle Produkte müssen am Ende ihrer Lebensdauer zum Recycling an Zebra zurückgesandt werden. Informationen zur Rücksendung von Produkten finden Sie unter <http://www.motorolasolutions.com/recycling/weee>.

Ελληνικά: Για πελάτες στην Ε.Ε.: Όλα τα προϊόντα, στο τέλος της διάρκειας ζωής τους, πρέπει να επιστραφούν στην Zebra για ανακύκλωση. Για περισσότερες πληροφορίες σχετικά με την επιστροφή ενός προϊόντος, επισκεφτείτε τη διεύθυνση <http://www.motorolasolutions.com/recycling/weee> στο Διαδίκτυο.

English: For EU Customers: All products at the end of their life must be returned to Zebra for recycling. For information on how to return product, please go to: <http://www.motorolasolutions.com/recycling/weee>.

Español: Para clientes en la Unión Europea: todos los productos deberán entregarse a Zebra al final de su ciclo de vida para que sean reciclados. Si desea más información sobre cómo devolver un producto, visite: <http://www.motorolasolutions.com/recycling/weee>.

Eesti: EL klientidele: kõik tooted tuleb nende elutsükli lõppedes tagastada taaskasutamise eesmärgil Zebra'le. Lisainformatsiooni saamiseks toote tagastamise kohta külastage palun aadressi: <http://www.motorolasolutions.com/recycling/weee>.

Français: Clients de l'Union Européenne : Tous les produits en fin de cycle de vie doivent être retournés à Zebra pour recyclage. Pour de plus amples informations sur le retour de produits, consultez : <http://www.motorolasolutions.com/recycling/weee>.

Magyar: Az EU-ban vásárlóknak: Minden termékemért meg kell adni a Zebra vállalatához kell eljuttatni újrahasznosítás céljára. A termék visszajuttatásának módjával kapcsolatos tudnivalókról látogasson el a <http://www.motorolasolutions.com/recycling/weee>.

Italiano: per i clienti dell'UE: tutti i prodotti che sono giunti al termine del rispettivo ciclo di vita devono essere restituiti a Zebra al fine di consentirne il riciclaggio. Per informazioni sulle modalità di restituzione, visitare il seguente sito Web: <http://www.motorolasolutions.com/recycling/weee>.

Lietuvių: ES vartotojams: visi gaminiai, pasibaigus jų eksploatacijos laikui, turi būti gražinti utilizuoti į kompaniją „Zebra“. Daugiau informacijos, kaip gražinti gaminį, rasite: <http://www.motorolasolutions.com/recycling/weee>.

Latviešu: ES klientiem: visi produkti pēc to kalpošanas mūža beigām ir jānogādā atpakaļ Zebra otrreizējai pārstrādei. Lai iegūtu informāciju par produktu nogādāšanu Zebra, lūdzu, skatiet: <http://www.motorolasolutions.com/recycling/weee>.

Maltese: Għal klijenti fl-UE: I-prodotti kollha li jkunu wasslu fl-aħħar tal-hajja ta' l-użu tagħhom, iridu jiġu ritornati għand Zebra għar-riciklaġġ. Għal aktar taġġir dwar kif għandek tirritorna l-prodott, jekk jogħġbok zur: <http://www.motorolasolutions.com/recycling/weee>.

Nederlands: Voor klanten in de EU: alle producten dienen aan het einde van hun levensduur naar Zebra te worden teruggezonden voor recycling. Raadpleeg <http://www.motorolasolutions.com/recycling/weee> voor meer informatie over het terugzenden van producten.

Polski: Klient z obszaru Unii Europejskiej: Produkty wycofane z eksploatacji należy zwrócić do firmy Zebra w celu ich utylizacji. Informacje na temat zwrotu produktów znajduj się na stronie internetowej <http://www.motorolasolutions.com/recycling/weee>.

Português: Para clientes da UE: todos os produtos no fim de vida devem ser devolvidos à Zebra para reciclagem. Para obter informações sobre como devolver o produto, visite: <http://www.motorolasolutions.com/recycling/weee>.

Românesc: Pentru clienții din UE: Toate produsele, la sfârșitul duratei lor de funcționare, trebuie returnate la Zebra pentru reciclare. Pentru informații despre returnarea produsului, accesați: <http://www.motorolasolutions.com/recycling/weee>.

Slovenščina: Pre zăkaznikov z krajin EU: Všetky výrobky musia byť po uplynutí doby ich životnosti vrátené spoločnosti Zebra na recykláciu. Blížšie informácie o vrátení výrobkov nájdete na: <http://www.motorolasolutions.com/recycling/weee>.

Slovenski: Za kupce v EU: vsi izdelki se morajo po poteku življenjske dobe vrniti podjetju Zebra za reciklažo. Za informacije o vračilu izdelka obiščite: <http://www.motorolasolutions.com/recycling/weee>.

Svenska: För kunder inom EU: Alla produkter som uppnått sin livslängd måste returneras till Zebra för återvinning. Information om hur du returnerar produkten finns på <http://www.motorolasolutions.com/recycling/weee>.

Türkçe: AB Müşterileri için: Kullanım süresi dolan tüm ürünler geri donüştürme için Zebra'ya iade edilmelidir. Ürünlerin nasıl iade edileceği hakkında bilgi için lütfen şu adresi ziyaret edin: <http://www.motorolasolutions.com/recycle/weee>.

TURKISH WEEE Statement of Compliance

EEE Yönetmeliğine Uygundur

This device is approved under Symbol Technologies, Inc., a Zebra Technologies company. This guide applies to Model Number: LI2208. All Zebra devices are designed to be compliant with rules and regulations in locations they are sold and will be labeled as required. Local language translations are available at the following website: <http://www.motorolasolutions.com/support>.

Any changes or modifications to Zebra equipment, not expressly approved by Zebra, could void the user's authority to operate the equipment.

Health and Safety Recommendation

Ergonomic Recommendations

Caution: In order to avoid or minimize the potential risk of ergonomic injury follow the recommendations below. Consult with your local Health & Safety Manager to ensure that you are adhering to your company's safety programs to prevent employee injury.

- Reduce or eliminate repetitive motion
- Maintain a natural position
- Reduce or eliminate excessive force
- Keep objects that are used frequently within easy reach
- Perform tasks at correct heights
- Reduce or eliminate vibration
- Reduce or eliminate direct pressure
- Provide adjustable workstations
- Provide adequate clearance
- Provide a suitable working environment
- Improve work procedures.

Class 1 LED Safety

COMPLIES WITH IEC 60825-1:2001 (Ed.1.2) & IEC 62471:2006 (Ed.1.0)/EN 62471:2008



LED Output

This device contains two LEDs for illumination and aiming.

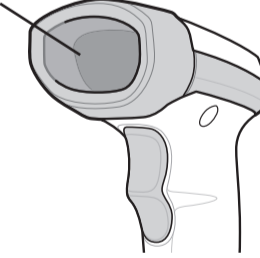
Aim/Illumination:

Optical Output: 0.87mW
Pulse Duration: Continuous
Emitted Wavelength: 590-650nm

Viewing the LED output with certain optical instruments (for example, eye loupes, magnifiers and microscopes) may pose an eye hazard.

Caution: Use of controls or adjustments or performance of procedures other than those specified herein may result in hazardous LED light exposure.

LED light is emitted from this aperture:



Radio Frequency Interference Requirements - FCC



Note: This equipment has been tested and found to comply with the limits for a Class B digital device, pursuant to Part 15 of the FCC rules. These limits are designed to provide reasonable protection against harmful interference in a residential installation. This equipment generates, uses and can radiate radio frequency energy and, if not installed and used in accordance with the instructions, may cause harmful interference to radio communications. However there is no guarantee that interference will not occur in a particular installation. If this equipment does cause harmful interference to radio or television reception, which can be determined by turning the equipment off and on, the user is encouraged to try to correct the interference by one or more of the following measures:

- Reorient or relocate the receiving antenna
- Increase the separation between the equipment and receiver
- Connect the equipment into an outlet on a circuit different from that to which the receiver is connected
- Consult the dealer or an experienced radio/TV technician for help.

Radio Frequency Interference Requirements - Canada

This Class B digital apparatus complies with Canadian ICES-003. Cet appareil numérique de la classe B est conforme à la norme NMB-003 du Canada.

CE Marking and European Economic Area (EEA)

Statement of Compliance

Zebra hereby declares that this device is in compliance with all the applicable Directives, 2004/108/EC and 2006/95/EC. A Declaration of Conformity may be obtained from <http://www.motorolasolutions.com/doc>

Other Countries

Japan (VCCI) - Voluntary Control Council for Interference Class B ITE

この装置は、情報処理装置等電波障害自主規制協議会（VCCI）の基準に基づくクラスB情報技術装置です。この装置は、家庭環境で使用することを目的としていますが、この装置がラジオやテレビジョン受信機に近接して使用されると、受信障害を引き起こすことがあります。取扱説明書に従って正しい取り扱いをして下さい。

Korea Warning Statement for Class B ITE

| 기종별 | 사용자안내문 |
|--------------------|--|
| B급 기기 (가정용 방송통신기기) | 이 기기는 가정용(B급)으로 전자파적합등록을 한 기기로서 주로 가정에서 사용하는 것을 목적으로 하며, 모든 지역에서 사용할 수 있습니다. |

Ukraine

Дане обладнання відповідає вимогам технічного регламенту №1057, № 2008 на обмеження щодо використання деяких небезпечних речовин в електричних та електронних пристроях.

China RoHS

This table was created to comply with China RoHS requirements.

| 部件名称 (Parts) | 有毒有害物质或元素 (50) | | | | | |
|---|----------------|--------|--------|-------------------------|------------|--------------|
| | 铅 (Pb) | 汞 (Hg) | 镉 (Cd) | 六价铬 (Cr ^{VI}) | 多溴联苯 (PBB) | 多溴二苯醚 (PBDE) |
| 金属部件 (Metal Parts) | X | 0 | 0 | 0 | 0 | 0 |
| 电路模块 (Circuit Modules) | X | 0 | 0 | 0 | 0 | 0 |
| 电缆及电缆组件 (Cables and Cable Assemblies) | 0 | 0 | 0 | 0 | 0 | 0 |
| 塑料和聚合物部件 (Plastic and Polymeric Parts) | 0 | 0 | 0 | 0 | 0 | 0 |
| 光学和光学组件 (Optics and Optical Components) | X | 0 | 0 | 0 | 0 | 0 |
| 电池 (Batteries) | 0 | 0 | 0 | 0 | 0 | 0 |

0: 表示该有毒有害物质在该部件所有均质材料中的含量均在 SJ/T11363-2006 标准规定的限量要求以下。

X: 表示该有毒有害物质至少在该部件的某一均质材料中的含量超出 SJ/T11363-2006 标准规定的限量要求。

对销售之日的所售产品, 本表表示, 公司供应链的电子产品信息产品可能包含这些物质。注意: 在所售产品中可能会也可能不会含有所有列出的部件。



Zebra Technologies Corporation
Lincolnshire, IL U.S.A.

Zebra and the Zebra head graphic are registered trademarks of ZIH Corp. The Symbol logo is a registered trademark of Symbol Technologies, Inc., a Zebra Technologies company.
© 2014 Symbol Technologies, Inc.



72-170536-02 Revision A December 2014



LI2208 LINEAR IMAGER